

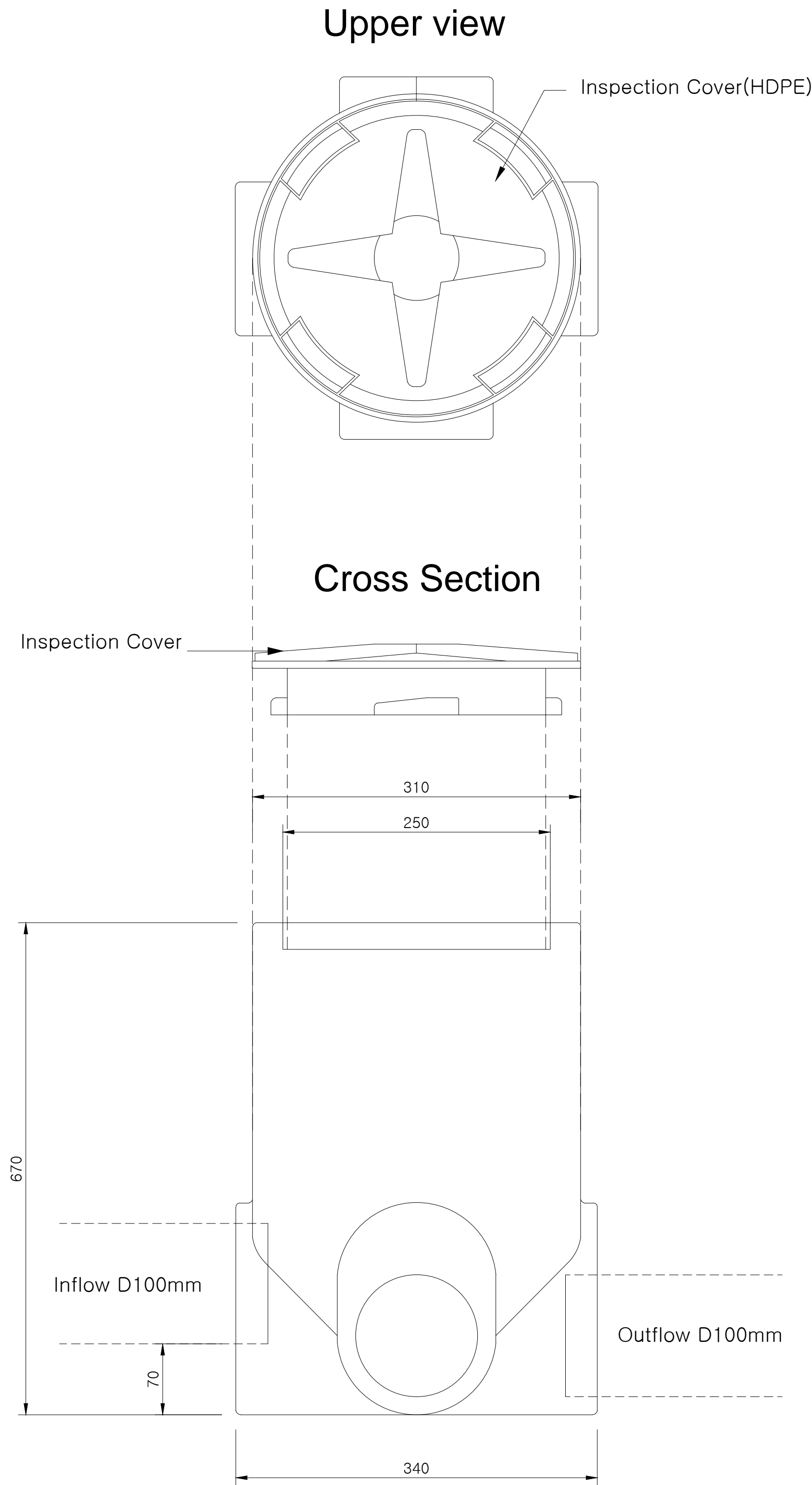
House inlet details

S = NONE

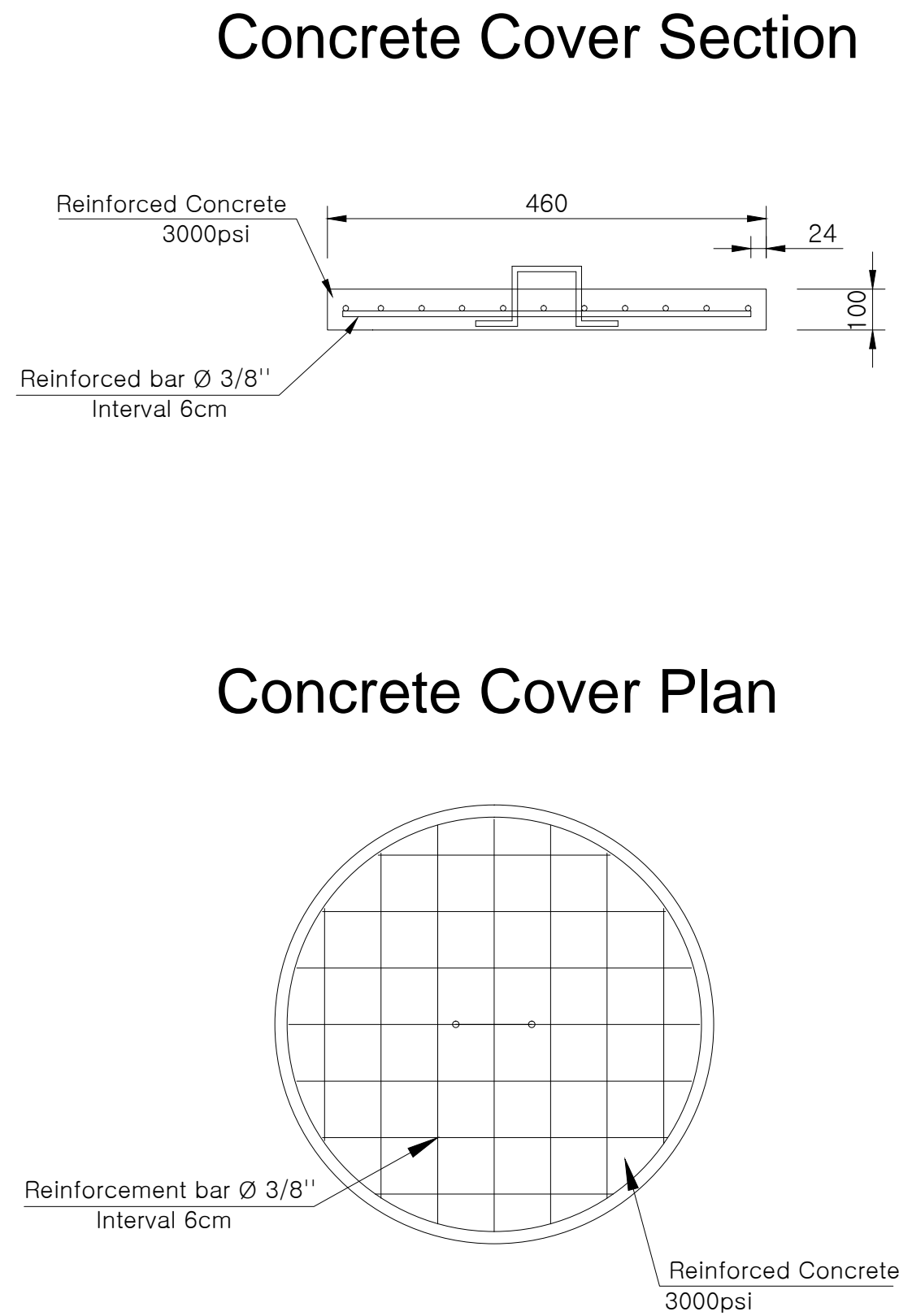
NOTE

The structure, shape and material of house inlet can be changed under the approval of the Engineer, in case changed house inlet can provide equal or higher quality and performance.

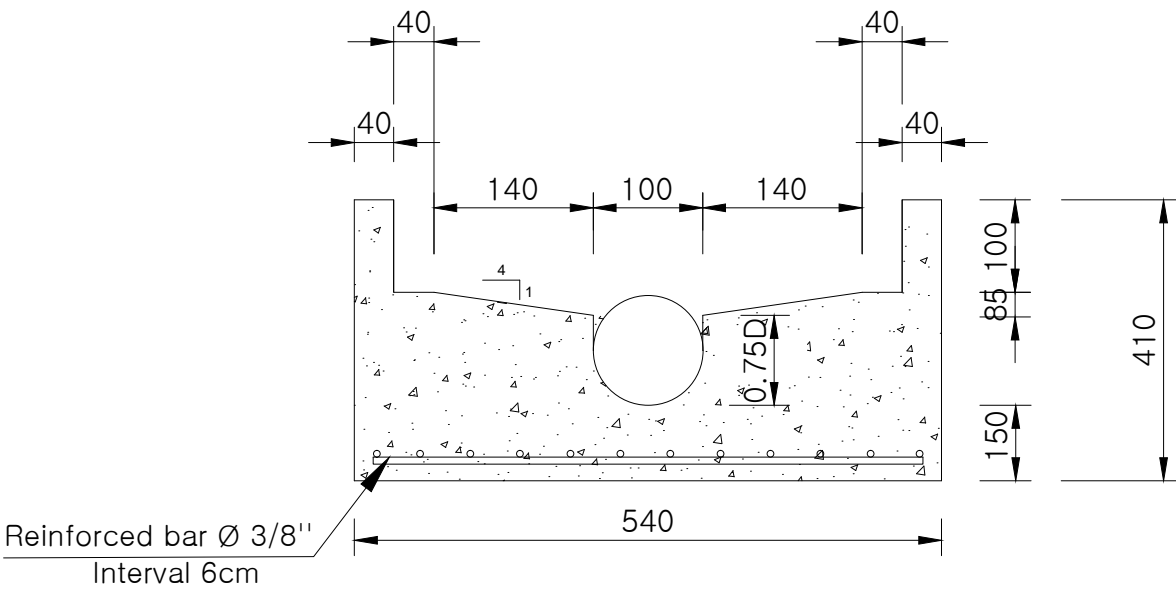
PE Inspection Case(Conventional system)



Concrete Inspection Case(Condominial system)



Concrete Base Detail(Ø0.4m)



Cylindrical House inlet for branch(Ø0.4m)

